



Douglas Bowen-Bailey <dfbowenbailey@stkate.edu>

---

## A Free Course: Reflective Self-Assessment

1 message

---

CATIE Center at St. Catherine University <catiecenter@stkate.edu>

Thu, Mar 23, 2023 at 2:03 PM

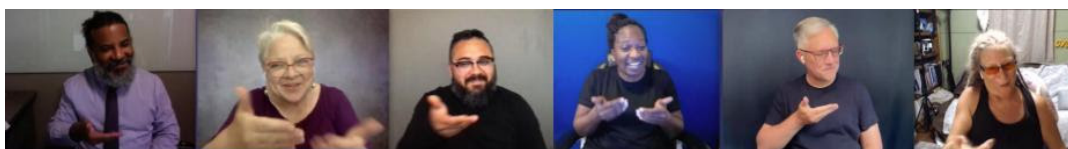
Reply-To: dfbowenbailey@stkate.edu

To: dfbowenbailey@stkate.edu

# STEPPING STONES

## FOR NOVICE INTERPRETERS

### Reflective Self-Assessment for Novice Interpreters



Check out this free online course on building capacity for reflective self-assessment. It is the sixth offering in Stepping Stones for Novice Interpreters, a self-directed track from the CATIE Center's Dive In project.



[Click here or on the above image to view the ASL description of the course.](#)

This course is designed to encourage thoughtful work production as well as ongoing reflection and evaluation of factors influencing interpreting decisions. Participants in this course will each begin by individually interpreting a source text. They will then examine the interpretation they created and reflect upon their work using categories adapted from the Interpreting Performance Assessment Rubric (ProjectTIEM). The Interpreting Performance Assessment Rubric supports unpacking multiple aspects of the interpretation, not just language fluency or vocabulary choices. This course takes an additional step in examining interpretation and reflection by sharing the interpretations of this same source text by a group of expert interpreters who, similarly to this course format, had opportunities to reflect upon their work. Finally, participants can apply their discoveries to a personal professional development plan, including application of the reflective practice to other interpreting samples.

## Learning Objectives

Participants completing this course will:

- Identify patterns in an interpretation that indicate strength or opportunities for development as an interpreter
- Analyze decisions made before, during or after the work for effectiveness
- Synthesize findings using a specific set of categories focused on the overall interpretation including Content, Intent, Cues & Strategies, Role-Space, Ergonomics and Environment
- Create a professional development plan for use with ongoing education and mentoring

The course is designed to be completed over 6 weeks, at your own pace and takes at least 10 hours to complete. Each module will have a specific focus and include opportunities for application and reflection. The course registration will be available from March 23- May 15, 2023.

## Optional GoReact Course Now Available

We now have a Stepping Stones GoReact course available. It requires a GoReact license so there is a cost involved if you don't already have a license. Details are explained in the Canvas

course.

## A Note about CEUs

Because our grant is focused on novice interpreters working toward certification, CEUs are not offered. Interpreters interested in CEUs can initiate a PINRA with an RID approved sponsor.

For a PINRA application, you need the following information:

- **Flyer for the course:** [Available for download from Noviceinterpreters.org](#) to include with your PINRA application.
- **CEUs to request:** 1.0 CEUs in Professional Studies
- **Workshop Description and Agenda:** Available as Google Doc. You can download this page to include with your PINRA application.
- **Documentation of Learning:** This course will take at least 10 hours to complete and you will receive a certificate of completion at the end that you can share with your sponsor. Additionally, if your sponsor requires reflections on what you have learned, you can copy your reflections from the course to share with them.
- **Dates of Activity:** You can choose to start the activity any time before May 15, 2023. When you complete it is up to you, but there will not be any facilitation after May 15, 2023.

[Click here to register for the course](#)

## About Stepping Stones for Novice Interpreters

This course is part of a series developed by the Dive In project of the CATIE Center at St. Catherine University. Each module will have a facilitator from the CATIE Center who monitors a Support Forum. The activities are designed so that you can do them asynchronously. Though possible to do independently, we encourage you to either join as a group and work through the material together – or use the introduction forum to seek out others in the course who might work with you in the discussions. Collaborative learning can be a really important tool in professional development.

## What's Coming

In April 2023, we will open:

- Interpreting in the Outdoors - a course that focuses on the skills needed for interpreters working in wilderness and conservation settings.

[Click here to see the plan for the Stepping Stones series.](#)

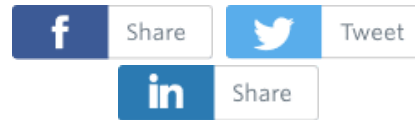
*The Dive In project at St. Catherine University CATIE Center is funded by the US Department of Education, Rehabilitation Services Administration. Award #H160D210003.*

ST. CATHERINE UNIVERSITY



Advancing Interpreting Excellence

Share with your network



Interpreter Education Projects CFDA 84.160C and 84.160D | [2004 Randolph Avenue, St. Paul, MN 55105](#)

[Unsubscribe {recipient's email}](#)

[Update Profile](#) | [Constant Contact Data Notice](#)

Sent by [catiecenter@stkate.edu](mailto:catiecenter@stkate.edu) powered by



Try email marketing for free today!

**THIS IS A TEST EMAIL ONLY.**

This email was sent by the author for the sole purpose of testing a draft message. If you believe you have received the message in error, please contact the author by replying to this message. Constant Contact takes reports of abuse very seriously. If you wish to report abuse, please forward this message to [abuse@constantcontact.com](mailto:abuse@constantcontact.com).